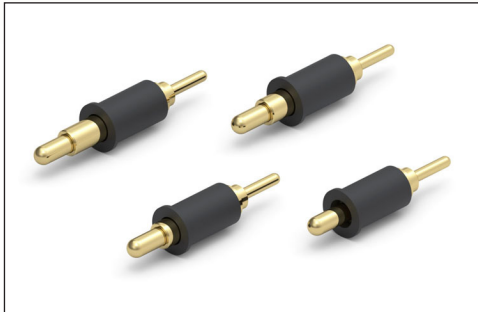


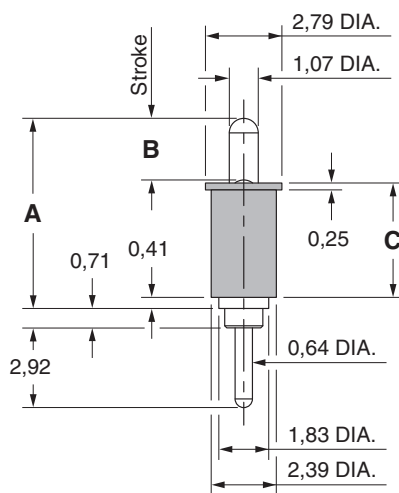
SPRING-LOADED CONNECTORS

SERIES 807 • DISCRETE INSULATED SPRING-LOADED PINS • THROUGH-HOLE MOUNT

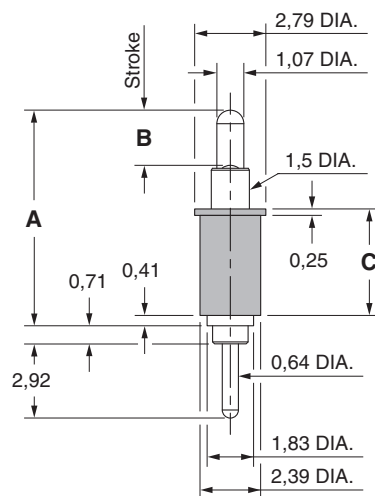


- Discrete insulated spring-loaded pins; available in four heights from 6,96 to 9,25, with working travel of 1,14
- Precision-machined piston / base and gold-plated components assure up to 1,000,000 cycle life durability
- Low resistance contacts are rated at 2 amps continuous, 3 amps peak
- High temperature thermoplastic insulators are suitable for most soldering processes
- 807 series, contact styles 0 through 3, are packaged in bulk. See below for ordering information

Series 807 (Contact Style 0)



Series 807 (Contact Style 1 - 3)



ORDERING INFORMATION

Series 807 (Bulk Packaged)

807-22-001-10-02X101

Specify contact style 0-3

Contact Style	Initial Height (A)	Working Travel	Full Stroke Range (B)	Sleeve Height (C)
0	6,96	1,14	2,16-2,29	4,19
1	7,72	1,14	2,16-2,29	4,19
2	8,48	1,14	2,16-2,29	4,19
3	9,25	1,14	2,16-2,29	4,19

Technical Specifications

Materials:

Contact piston & base: Machined copper alloy plated 0,51µm gold over 2,54µm nickel
Spring (Contact style 0-3): Beryllium copper-plated 0,25µm gold
Insulator: High temperature thermoplastic, rated UL94 V-0

Mechanical:

Spring force @ initial height (A) (Contact style 0-3): 25 grams
Spring force @ mid stroke (B/2) (Contact style 0-3): 60 grams
Durability: Up to 1,000,000 cycles

Electrical:

Current rating: 2A (continuous), 3A (peak) per contact
Contact resistance: 20mΩ max.
Insulation resistance: 10,000MΩ min.
Dielectric strength: 700Vrms min.

RoHS - 2
2011/65/EU

