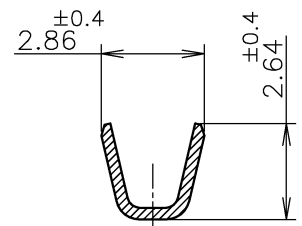
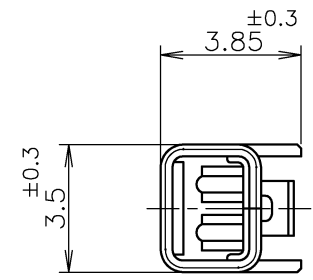
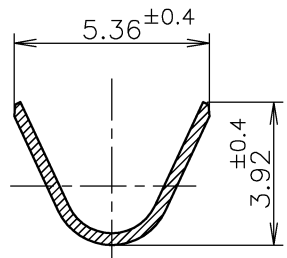


THIS DRAWING IS UNPUBLISHED. RELEASED FOR PUBLICATION
 © COPYRIGHT BY TYCO ELECTRONICS CORPORATION. ALL RIGHTS RESERVED.

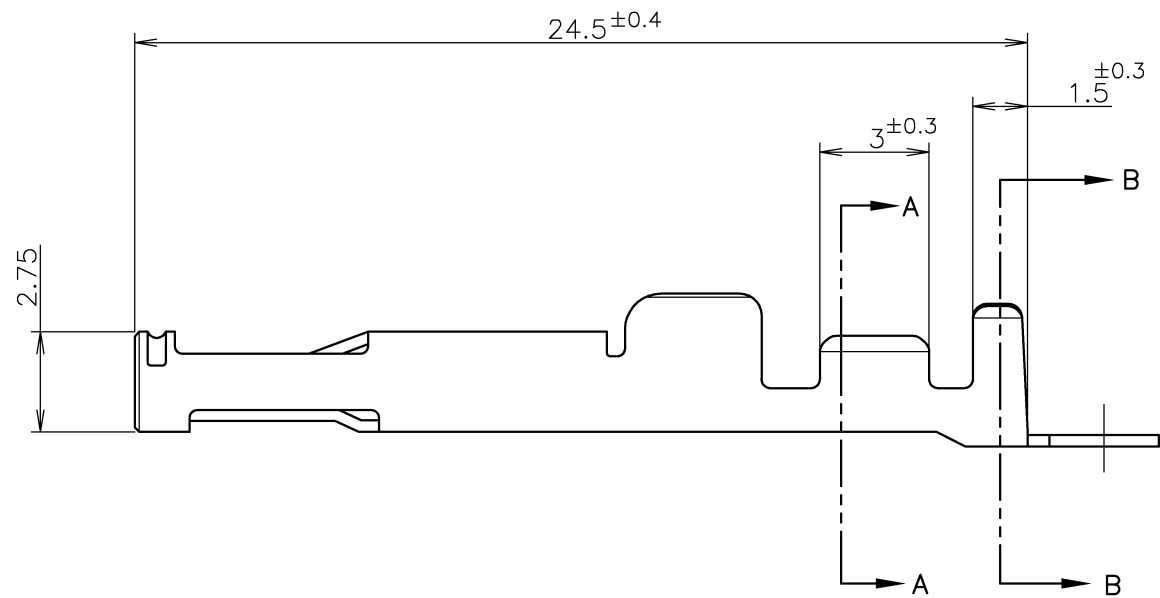
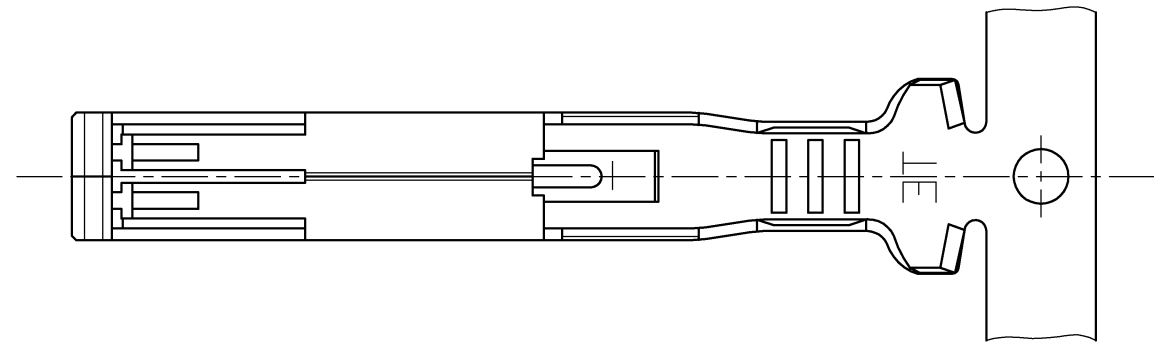
LOC	DIST	REVISIONS		
J		P	LTR	DESCRIPTION
		B		REVISED
			DATE	DWN
			19NOV2008	M.K
				APVD
				T.Y



SECT A-A



SECT. B-B



注記;
 △ 材料: 銅合金
 △ 仕上げ: 材料めっき
 全面ニッケル下地めっきの上に
 接触部: 金めっき
 圧着部: 錫めっき
 △ 仕上げ: 全面錫めっき
 4 使用コネクタ型番: X-1981377-X
 △ 一般公差
 10以下: ±0.2
 10を越え30以下: ±0.25
 30を越え100以下: ±0.3
 角度: ±3°

NOTES;
 △ MATERIAL: COPPER ALLOY
 △ FINISH: PRE-PLATED
 NICKEL PL ALL OVER
 CONTACT AREA: GOLD PL.
 BARREL AREA: TIN-LEAD PL.
 △ FINISH: TIN PL ALL OVER.
 4 USED CONNECTOR P/N: X-1981377-X
 △ GENERAL TOLERANCE
 10 ≥: ±0.2
 30 ≥ 10: ±0.25
 100 ≥ 30: ±0.3
 ANGLES: ±3°

△	1-1981379-1
△	1981379-1
仕上げ FINISH	P/N

WIRE RANGE 絶合電線断面積	0.52~1.38mm ² (AWG20~16)	INSULATION DIA 被覆外径	φ 1.82~3.21 mm
-----------------------	-------------------------------------	------------------------	----------------

THIS DRAWING IS A CONTROLLED DOCUMENT.		DWN	M.KATO	17APR2008	Tyco Electronics AMP K.K. Kawasaki, Japan													
		CHK	T.YAMADA	17APR2008														
		APVD	T.YAMADA	17APR2008	NAME 名称													
DIMENSIONS: 単位: 耗 mm		TOLERANCES UNLESS OTHERWISE SPECIFIED: 一般公差		PRODUCT SPEC 製品規格 108-78473														
<table border="1"> <tr><td>0 PLC</td><td>±</td><td rowspan="5">△</td></tr> <tr><td>1 PLC</td><td>±</td></tr> <tr><td>2 PLC</td><td>±</td></tr> <tr><td>3 PLC</td><td>±</td></tr> <tr><td>4 PLC</td><td>±</td></tr> <tr><td>ANGLES</td><td>±</td></tr> </table>		0 PLC	±	△	1 PLC	±	2 PLC	±	3 PLC	±	4 PLC	±	ANGLES	±	APPLICATION SPEC 取付適用規格 114-5427		RECEPTACLE GND CONTACT HYBRID MINI CT DRAWER POWER CONTACT	
0 PLC	±	△																
1 PLC	±																	
2 PLC	±																	
3 PLC	±																	
4 PLC	±																	
ANGLES	±																	
MATERIAL 材料	1 △	FINISH 仕上	2 △ 3 △	WEIGHT	SIZE A3													
				CAGE CODE 00779	DRAWING NO 番号 G-1981379													
		CUSTOMER DRAWING		SCALE 尺度	5:1													
				SHEET 1 of 1	REV B													