

MODEL NUMBER
TRM-2058-MC-SMA-02

NOTES:

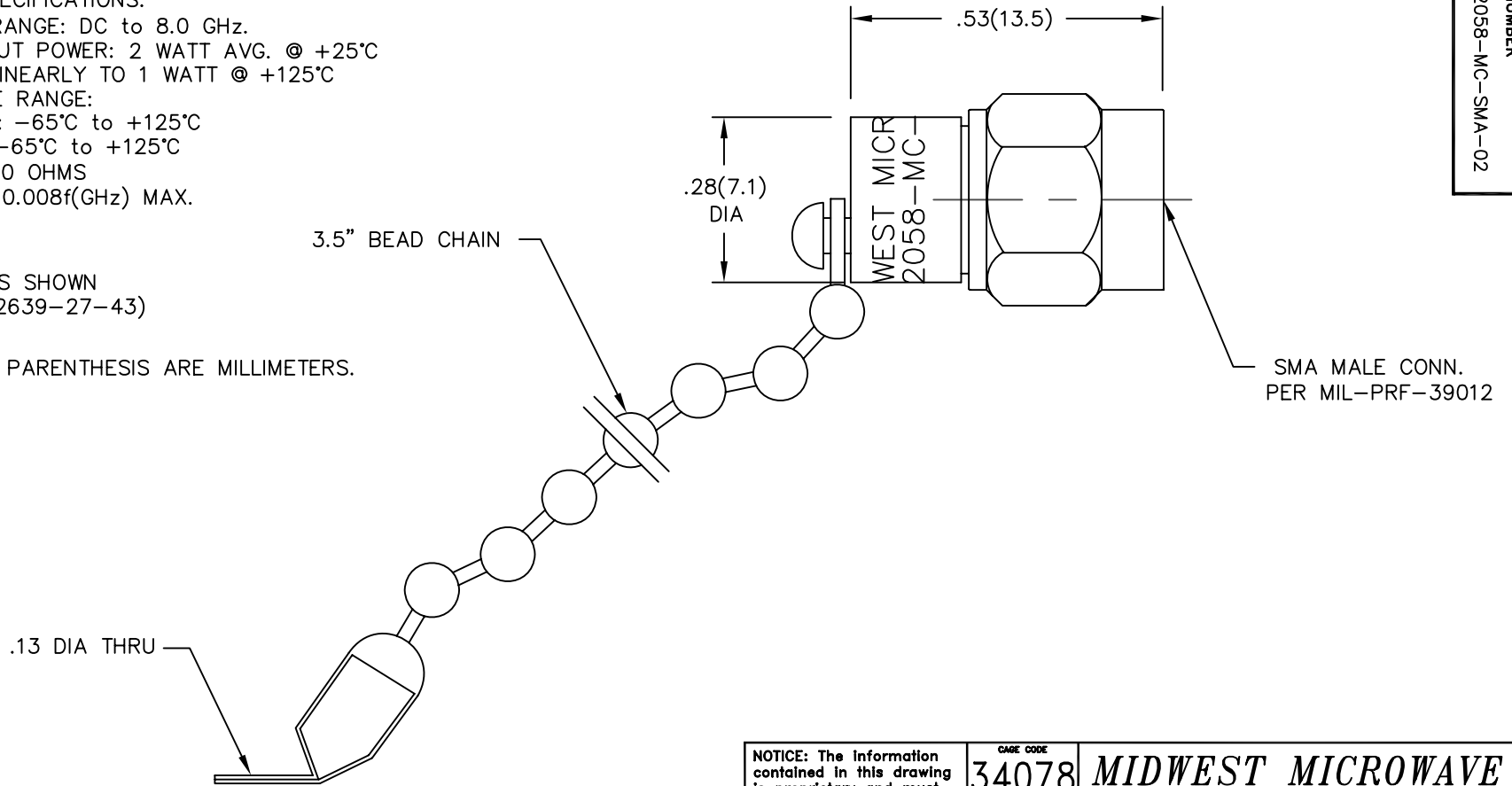
1.0 ELECTRICAL SPECIFICATIONS:

- 1.1 FREQUENCY RANGE: DC to 8.0 GHz.
- 1.2 MAXIMUM INPUT POWER: 2 WATT AVG. @ +25°C
DERATED LINEARLY TO 1 WATT @ +125°C
- 1.3 TEMPERATURE RANGE:
OPERATING: -65°C to +125°C
STORAGE: -65°C to +125°C
- 1.4 IMPEDANCE: 50 OHMS
- 1.5 VSWR: 1.05 +0.008f(GHz) MAX.

2.0 MARKING:

MARK UNIT AS SHOWN
(REF.: INK-02639-27-43)

3.0 DIMENSIONS IN PARENTHESIS ARE MILLIMETERS.



REV.	DESCRIPTION	DATE
-	RELEASED	1/20/94
-1	ADDED TITLEBLOCK	10/27/05

NOTICE: The information contained in this drawing is proprietary and must not be used without the permission of Emerson Network Power.		GAME CODE 34078		MIDWEST MICROWAVE	
UNLESS OTHERWISE NOTED DIMENSIONS ARE IN INCHES AND TOLERANCES ARE: 3 PLACE DECIMALS ±.005 2 PLACE DECIMALS ±.02 FRACTIONS ±1/64 PARALLELITY: T.I.R. FLATNESS: T.I.R. CONCENTRICITY: T.I.R. ANGLES AND PERPENDICULARITY: ±1'		 EMERSON Network Power Connectivity Solutions		TITLE TERMINATION OUTLINE DRAWING	
DRAWN/DATE M.HOLLMAN 1/11/94		ENG/DATE G.KOZAK 1/17/94		DRAWING NUMBER TRM-2058-MC-SMA-02-01	
CHECKED/DATE A.BEATTY 1/12/94		APPROVED/DATE		REV. -1	
SCALE: 5=1		SHEET 1 of 1			