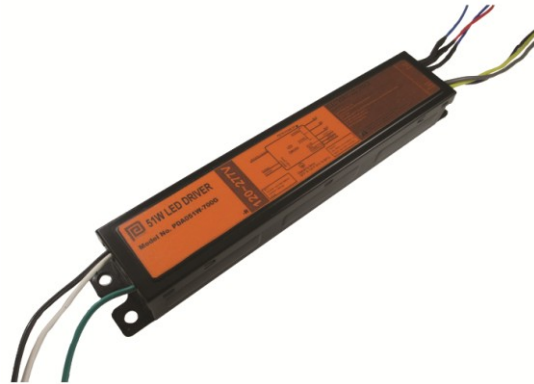




## 51W LED Driver with 2 Channel Constant Current Outputs PDA051W 0-10V Dimming LED Power Supply



### Features

- 2 Channel Output
- OVP, OCP, OTP and Short-Circuit Protection & Brownout Protection
- IP65 Rated
- Class 2 Output per UL1310
- THD <20% &  $\geq 0.9$  Power Factor

### Applications

- Troffers

### Safety Approvals

- cUL/UL8750
- Class 2 Output per UL1310

### Mechanical Characteristics

- Length: 242mm (9.53in)
- Width: 43.5mm (1.71in)
- Height: 30.5mm (1.2in)
- Weight: 650g

### Output Specifications

#### Channel 1~2

Model	DC Output Voltage			Output Current	Output Power
	Min.	Typ.	Max.		
PDA051W-700G	30V	33V	36V	700mA	25.5W

Phihong is not responsible for any error, and reserves the right to make changes without notice. Please visit our website at [www.phihong.com](http://www.phihong.com) for the most up-to-date specifications and contact information.

**INPUT:**

**AC Input Voltage Rating**  
108~304VAC

**Nominal AC Input Voltage**  
120 to 277VAC

**AC Input Frequency**  
47~63 Hz

**Maximum Input Current**  
≤ 0.64A

**Leakage Current**  
0.75mA maximum

**Power Factor**  
≥ 0.9

**THD**  
< 20%

**OUTPUT:**

**Output Current Ripple**  
450mA(p-p)

**Efficiency**  
81% at 120VAC  
83% at 277VAC  
Typical Efficiency 85%

**Environmental:**

**Temperature**

Operation Tc                    0 to 70°C  
Non-operation                 -40 to +85°C  
Operating Humidity         10% to 95%

**EMC**

FCC 47 CFR Part 15, Class A

**Immunity**

IEC61000-4-2  
IEC61000-4-5  
IEC61000-4-11

**Dielectric Withstand (Hi-pot) Test**

Primary to secondary: 3000VAC for 1 minute, 10mA

**Insulation Resistance**

Primary to secondary: >5M Ohm 500VDC, 1 Minute

**Short-Circuit Protection**

Latch requires power cycle to restart

**Output Over-voltage Protection**

Max Voltage Limit 63V

**Over Temperature Protection**

Max Temperature Limit 85°C

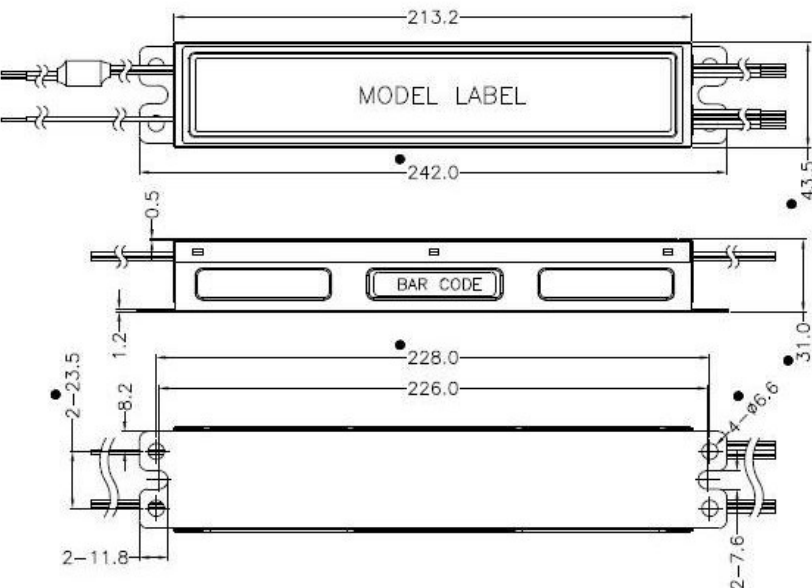
**Input / Output Connections**

Position	Terminal Color	Specification	Length
Input	Black	AWG16 Solid Wire	360mm
	White	AWG16 Solid Wire	360mm
	Green/Yellow	AWG16 Solid Wire	220mm
Output	Red(+)	AWG18 Solid Wire	200mm
	Blue(-)	AWG18 Solid Wire	200mm
Dim+	Purple(+)	AWG18 Solid Wire	200mm
Dim-	Grey(-)	AWG18 Solid Wire	200mm
Auxiliary	Yellow	AWG18 Solid Wire	200mm

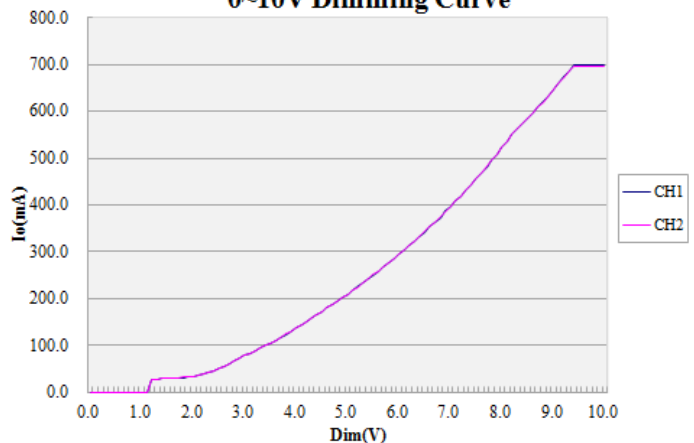
**Warranty**

5 Years

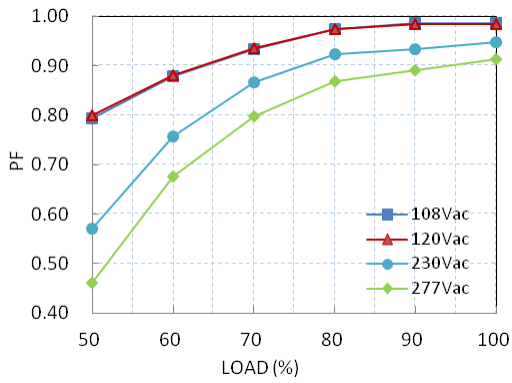
**Dimesino Diagram unit: mm**



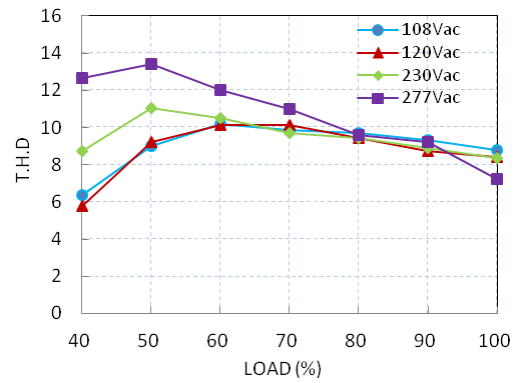
**0~10V Dimming Curve**



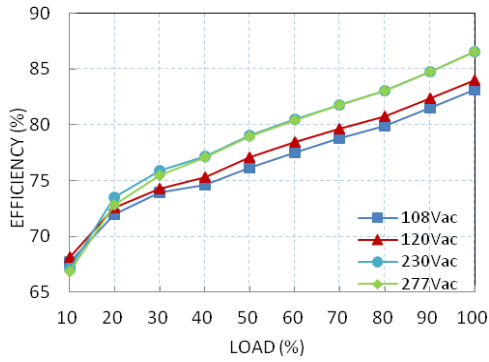
Power Factor vs. Load



Total Harmonic Distortion vs. Load



Lifetime vs. Tc



Efficiency vs. Load

