

Overview

The C/CT-1216 clamp-on current sensor can be used to measure currents in live wires.

Applications

Typical applications include EMS current measurement, high performance distributions boards, power conditioners, power monitoring systems, inverters and industrial machineries.

Benefits

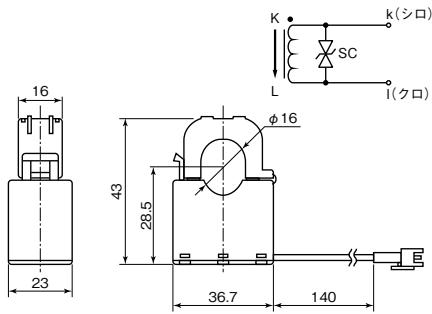
- Compact and slim design
- Flat temperature characteristics
- Flame retardant
- RoHS compliant



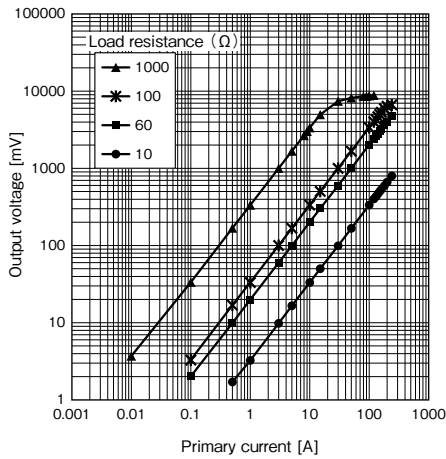
Ordering Information

C/CT-	12	16
Series	Rated Current (A)	Diameter (mm)
C/CT	12 = 120	16

Dimensions in mm



Output Characteristics



Environmental Compliance

All C/CT sensors are RoHS compliant.

Temperature Characteristics

Operating Temperature Range (°C)	Storage Temperature Range (°C)
-20 to 60	-20 to 80

Table 1 – Ratings & Part Number Reference

Part Number	Rated Current ¹ (A)	Applicable Current ¹ (A)	Output Voltage ² (mV)	Current Transformation Ratio	Output Protection (V)	Insulation Resistance
C/CT-1216	120	0.1 – 120	1,000+/-20	3,000	7.5	500 VDC to 100 MΩ

¹ 50Hz/60Hz

² Measurement conditions from output voltage: $f = 50 \text{ Hz}$, $R = 60 \Omega$, $I_o = 50 \text{ A}$

Precautions

Before Using High Alternating Current Sensors, Snap-on Type

- Do NOT drop or apply any other mechanical stress.
- Preliminary study is required when heating by current conduction.
- Do NOT use the High Alternating Current Sensors, Snap-on Type, opened between secondary output terminals. Heat build-up in the magnetic core may occur, resulting in damages to the parts by melting of the coil.

KEMET Electronic Corporation Sales Offices

For a complete list of our global sales offices, please visit www.kemet.com/sales.

Disclaimer

All product specifications, statements, information and data (collectively, the "Information") in this datasheet are subject to change. The customer is responsible for checking and verifying the extent to which the Information contained in this publication is applicable to an order at the time the order is placed.

All Information given herein is believed to be accurate and reliable, but it is presented without guarantee, warranty, or responsibility of any kind, expressed or implied.

Statements of suitability for certain applications are based on KEMET Electronics Corporation's ("KEMET") knowledge of typical operating conditions for such applications, but are not intended to constitute – and KEMET specifically disclaims – any warranty concerning suitability for a specific customer application or use. The Information is intended for use only by customers who have the requisite experience and capability to determine the correct products for their application. Any technical advice inferred from this Information or otherwise provided by KEMET with reference to the use of KEMET's products is given gratis, and KEMET assumes no obligation or liability for the advice given or results obtained.

Although KEMET designs and manufactures its products to the most stringent quality and safety standards, given the current state of the art, isolated component failures may still occur. Accordingly, customer applications which require a high degree of reliability or safety should employ suitable designs or other safeguards (such as installation of protective circuitry or redundancies) in order to ensure that the failure of an electrical component does not result in a risk of personal injury or property damage.

Although all product-related warnings, cautions and notes must be observed, the customer should not assume that all safety measures are indicated or that other measures may not be required.

KEMET is a registered trademark of KEMET Electronics Corporation.