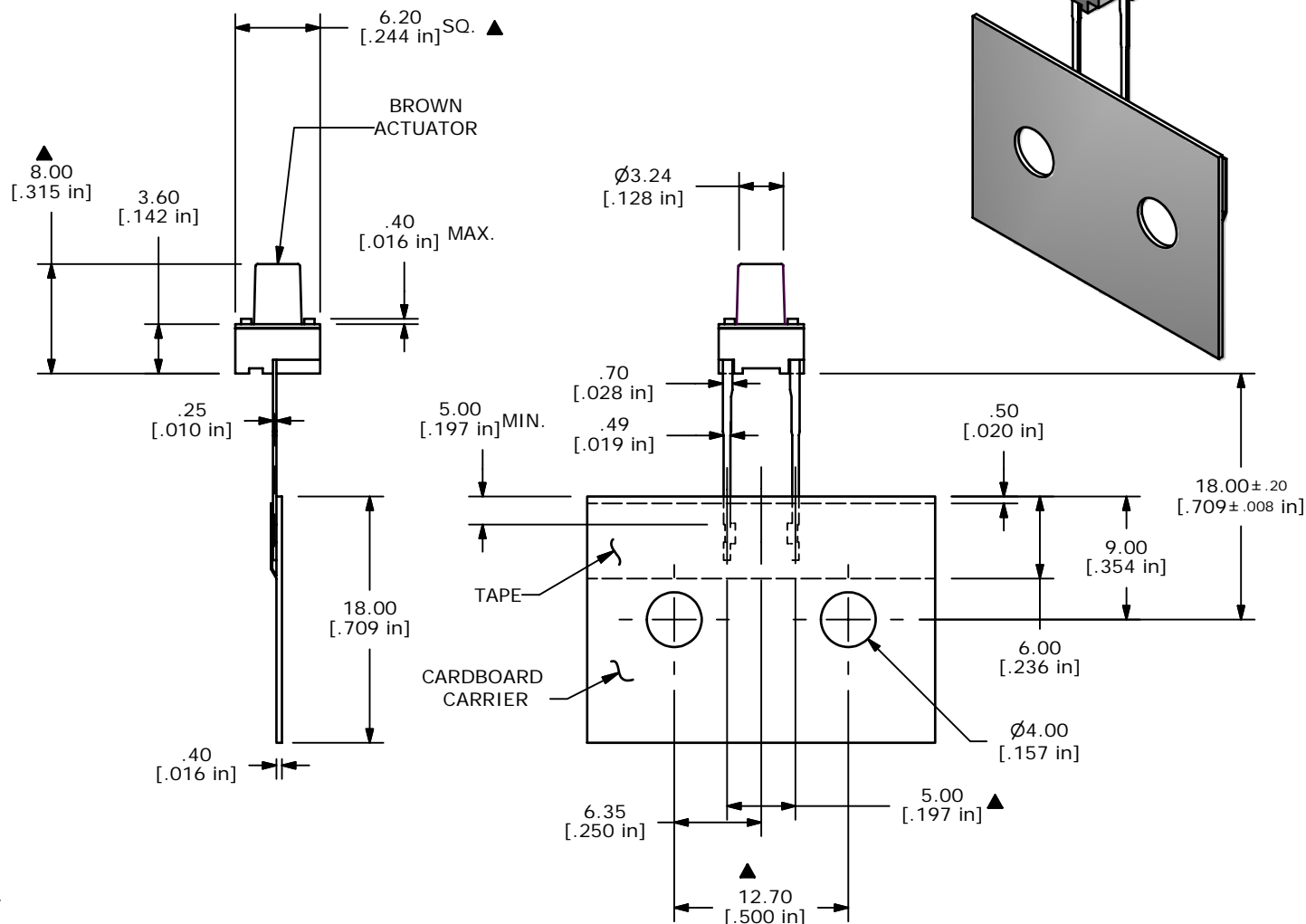


NOTES:

1. ALL DIMENSIONS IN MM [INCH]
2. GENERAL TOLERANCE: X.X=±0.4mm
 X.XX=±0.25mm
- ▲3. CONTACT RATING: 50mA @ 12VDC
4. CONTACT MATERIAL: SILVER
5. OPERATING FORCE: 100 ± 30gf
6. TRAVEL: 0.25 +0.2/-0.1mm
7. CONTACT RESISTANCE: 100mΩ MAX.
8. ELECTRICAL LIFE: 100,000 CYCLES
9. PACKAGING: 1,000 PCS RADIAL
10. OPERATING TEMP: -20°C to 70°C
11. 2002/95/EC (ROHS) COMPLIANT
12. ▲ DENOTES CRITICAL PRAMETERS.



TITLE TL59CF100Q

A	17900	RELEASED FOR PRODUCTION	12/20/07	BLR
REV	PCR NO	DESCRIPTION	DATE	BY

SCALE	DATE	DR	DWG	REV
2:1	12/20/2007	BLR	P010651	A

THE INFORMATION CONTAINED IN THIS DOCUMENT IS PROPRIETARY TO E-SWITCH AND IS NOT TO BE COPIED OR TRANSFERRED