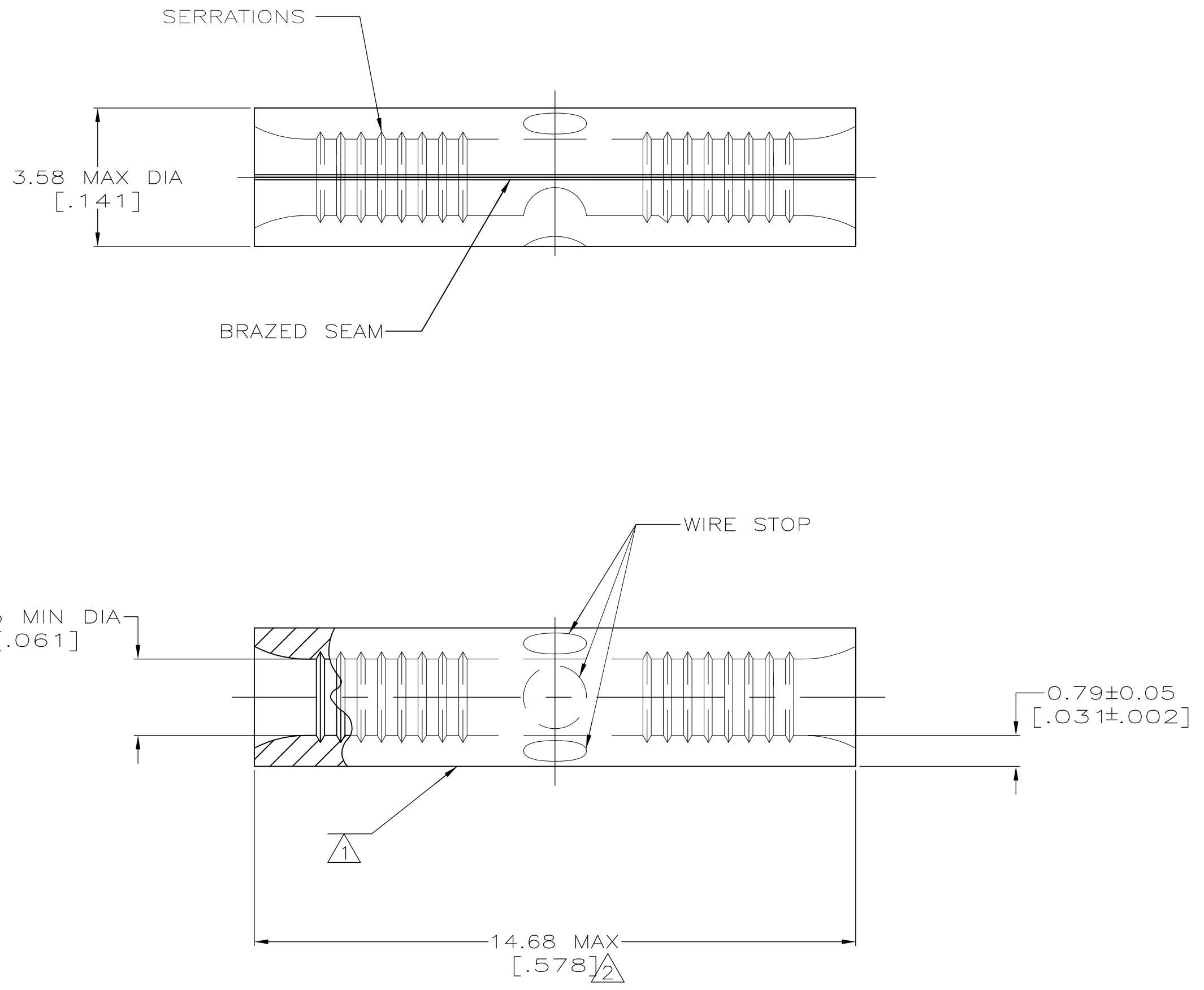


METRIC
 DIMENSIONS LISTED IN mm [INCHES]



| | |
|--------------------------------|--------------------------------|
| AMP WIRE RANGE | E13288 Listed |
| 22-16 AWG SOLID OR STRANDED | 22-16 AWG SOLID OR STRANDED |
| LR7189 Certified | MILITARY P/N AND CLASS |
| 22-16 AWG SOLID OR STRANDED | NOT APPLICABLE |

- 1 STAMP AMP 22-18* APPROX AS SHOWN
22-16 SPLICES ARE STAMPED 22-18 IN
ACCORDANCE WITH MILITARY SPEC MIL-T-7928
COMMERCIAL WIRE RANGE IS 22-16
- 2 MAXIMUM LENGTH DOES NOT INCLUDE
MANUFACTURING TABS

| | | |
|---|--|--|
| AMP INCORPORATED CUSTOMER SERVICE SYSTEMS | | MAX RECOMMENDED OPERATING TEMPERATURE: 170° C MAX |
| FOR ADDITIONAL PRODUCT INFORMATION OR COPIES OF DRAWINGS AND TECHNICAL DOCUMENTS | PRODUCT INFORMATION CENTER 1-800-522-6752 | VOLTAGE RATING: NOT APPLICABLE |
| FOR APPLICATION TOOLING INFORMATION | TOOLING ASSISTANCE CENTER 1-800-722-1111 | WIRE CROSS SECTIONAL AREA RANGE: 0.26-1.65mm ² [509-3,260] CIR MILS SOLID OR STRANDED |
| FOR ORDER ENTRY | 1-800-526-5142 | THIS DRAWING IS A CONTROLLED DOCUMENT FOR AMP INCORPORATED. IT IS SUBJECT TO CHANGE AND THE CONTROLLING ENGINEERING ORGANIZATION SHOULD BE CONTACTED FOR THE LATEST REVISION. |

| | | | | |
|--|--|--|--------------------|--|
| THIS DRAWING IS A CONTROLLED DOCUMENT. | | DWN TA BRINKMAN 4-13-93 | TE Connectivity | |
| DIMENSIONS: MM [INCHES] | | CHK DA PATTERSON 4-13-93 | NAME JL MECKLEY | |
| TOLERANCES UNLESS OTHERWISE SPECIFIED: | | APVD - | PRODUCT SPEC | |
| 0 PLC ± - | | APPLICATION SPEC | | |
| 1 PLC ± - | | WEIGHT - | | |
| 2 PLC ± - | | SIZE CAGE CODE DRAWING NO RESTRICTED TO | | |
| 3 PLC ± - | | A2 00779 G-31818 | | |
| 4 PLC ± - | | CUSTOMER DRAWING SCALE 10:1 SHEET 1 OF 1 REV H1 | | |
| ANGLES ± ± - | | | | |
| MATERIAL COPPER PER ASTM B-152 ANNEALED | | FINISH TIN PLATE 0.00254[.000100] MIN THK PER MIL-T-10727 | | |