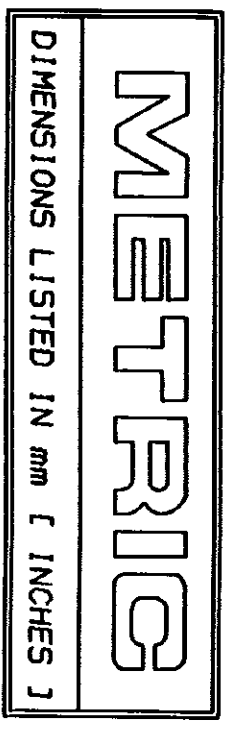
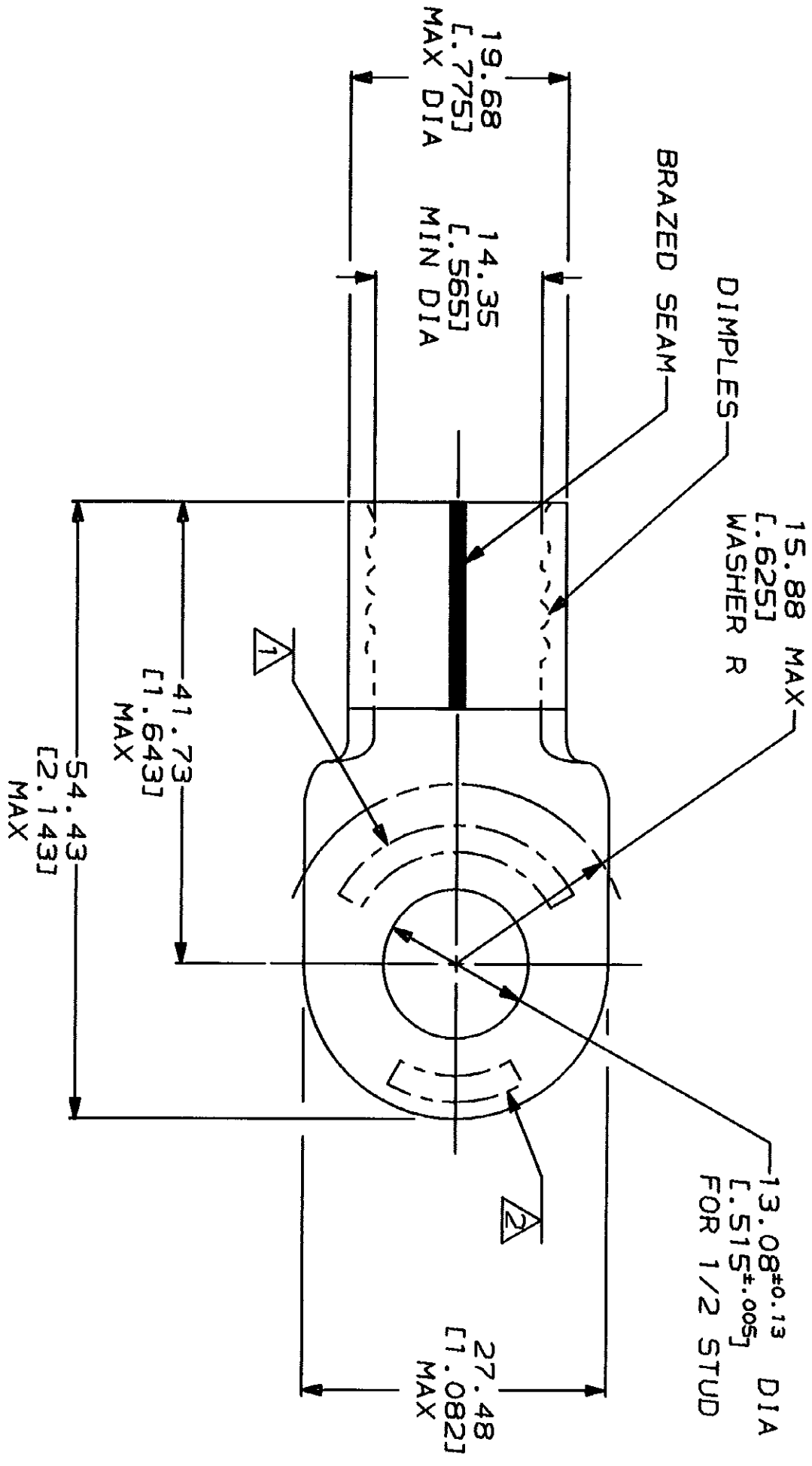


DRAWING MADE IN THIRD ANGLE PROJECTION			
THIS DRAWING IS UNPUBLISHED.		RELEASED FOR PUBLICATION	
© COPYRIGHT 1989 BY AMP INCORPORATED. ALL INTERNATIONAL RIGHTS RESERVED.			
AMP PART NO	MATERIAL	PKG TYPE	QTY
8-36929-3	M/F 8-36929-0	BOX	25
8-36929-5	M/F 8-36929-0	SPL	5



AMP WIRE RANGE	UL E13288 Listed
3/0 AWG SOLID OR STRANDED	3/0 AWG SOLID OR STRANDED
3/0 AWG SOLID OR STRANDED	MILITARY P/N AND CLASS NOT APPLICABLE

- △ STAMP AMP 3/0W* APPROX AS SHOWN
- △ STAMP 150 APPROX AS SHOWN
- 3 TONGUE MATERIAL THK: 2.31±0.08 [1.091 ±.003]

LOC	DIST	REV	DESCRIPTION	DATE	APPD
G	14				
			REVISED & REDRAWN PER 0720-0037-93	5/20/93	Q5 RER

AMP INCORPORATED
CUSTOMER SERVICE SYSTEMS

FOR ADDITIONAL PRODUCT INFORMATION OR COPIES OF DRAWINGS AND TECHNICAL DOCUMENTS
PRODUCT INFORMATION CENTER
1-800-522-6752

FOR APPLICATION TOOLING INFORMATION
TOOLING ASSISTANCE CENTER
1-800-722-1111

FOR ORDER ENTRY
1-800-526-5142

MAX RECOMMENDED OPERATING TEMPERATURE:
170°C MAX

VOLTAGE RATING:
NOT APPLICABLE

CIRCULAR MIL AREA:
76.3-96.3mm² (150,000-190,000) CIR MILS
SOLID OR STRANDED

DO NOT SCALE PRINT. UNLESS SPECIFIED OTHERWISE—IN—mm—FINISHES—TOLERANCES—ON—1—2 PLG DEC ± 0.20(1.000) ANGLES—MATERIAL—COPPER ASTM B-152 ANNEALED

FINISH—TIN PLATE
0.00254(1.000100) MIN THK PER MIL-T-10727

DR 5/20/93 DK SCHRUM	CHK 1/27/94 RD HEIH	APPD 1/27/94 RE ROSER	APPD 1/27/94 JL HECKLEY
APPLICATION SPEC		PRODUCT SPEC	

AMP
AMP Incorporated
Harrisburg, PA 17105-3508

TERMINAL, RING TONGUE,
SOLISTRAND™

SIZE	CAGE CODE	DRAWING NO
SCALE 2:1	00779	36929

36929
PART NO