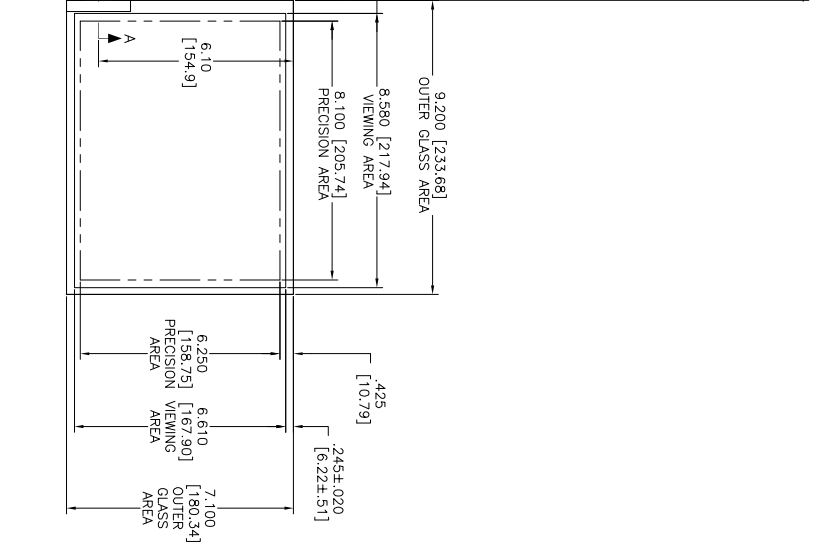
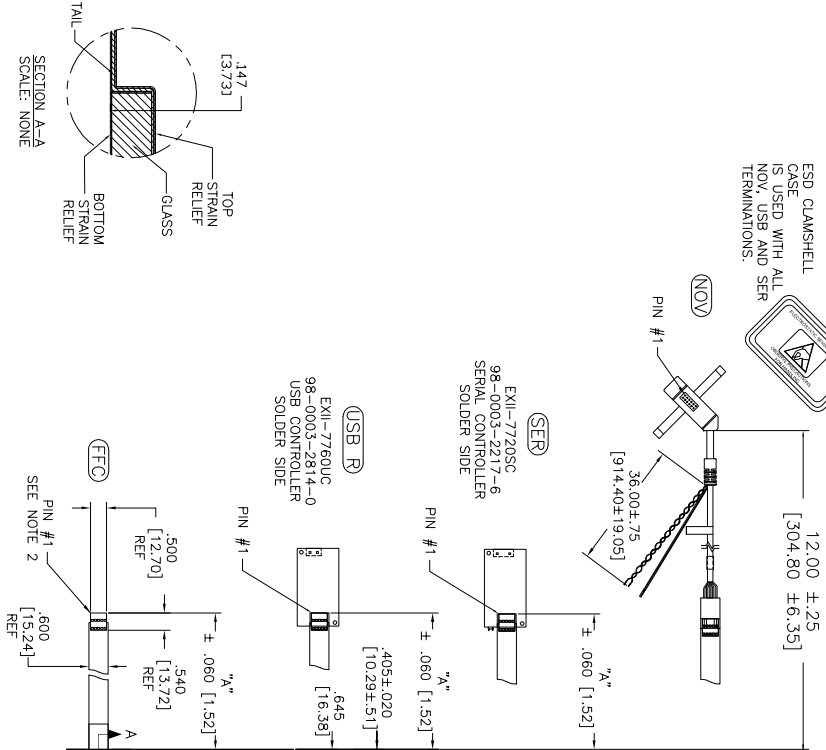
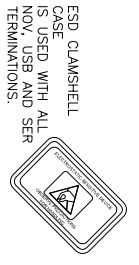


OGA DIAGONAL: 11.62 [295.18]
 VA DIAGONAL: 10.84 [275.46]
 PA DIAGONAL: 10.25 [260.26]



| TOP LEVEL NUMBER | US NUMBER | TYPE | DWG # (TOTAL GLASS TO CONNECTOR) | A/G FINISH | PROD SPEC |
|------------------|----------------|-------|----------------------------------|------------|-----------|
| 17-8021-203 | 98-0003-2503-9 | FCC | 4.27" [108.46] | AG500 | 23655 |
| 17-8021-205 | 98-0003-2504-7 | FCC | 8.00" [203.20] | AG500 | 23655 |
| 17-8021-206 | 98-0003-2505-4 | NOV | SEE DWG | AG500 | 23655 |
| 17-8021-221 | 98-0003-2507-0 | SFR | 4.27" [108.46] | AG500 | 23655 |
| 17-8021-227 | 98-0003-2510-4 | SFR | 8.00" [203.20] | AG500 | 23655 |
| 17-8021-218 | 98-0003-2916-3 | USB R | 4.27" [108.46] | AG500 | 23655 |
| 17-8021-226 | 98-0003-2509-6 | USB R | 8.00" [203.20] | AG500 | 23655 |

- NOTES:
- WEIGHT OF GLASS IN GRAMS: 321±10%
 - NICOMATIC HOUSING P/N: 0L05
 NICOMATIC RECEPTACLES (PINS) MATTE TIN PLATED P/N: 14106-12
 HOUSING ORIENTED WITH LATCH DOWN

| PINOUT |
|----------|
| 1 LR |
| 2 LL |
| 3 SHIELD |
| 4 UL |
| 5 UR |

UNITS: INCHES [MM]
 TOLERANCES UNLESS OTHERWISE SPECIFIED
 .XX ±.03 [.76]
 .XXX ±.015 [.38]
 ANGLES ±1°
 DIMS K. CROWLEY 9/05
 DO NOT SCALE DRAWING
 SCALE 1 = 1

| REV | DATE | BY | CHKD | DESCRIPTION |
|-----|------|----|------|-----------------------|
| H | | | | REVISED PER CO 036256 |
| G | | | | REVISED PER CO 033533 |
| F | | | | REVISED PER CO 033455 |

MARKETING DRAWING
 SCT32NN 10.84"

| | | | |
|----------------------|-------------|---------------------|-------|
| DO NOT SCALE DRAWING | SCALE 1 = 1 | DWG K. CROWLEY 9/05 | REV H |
|----------------------|-------------|---------------------|-------|