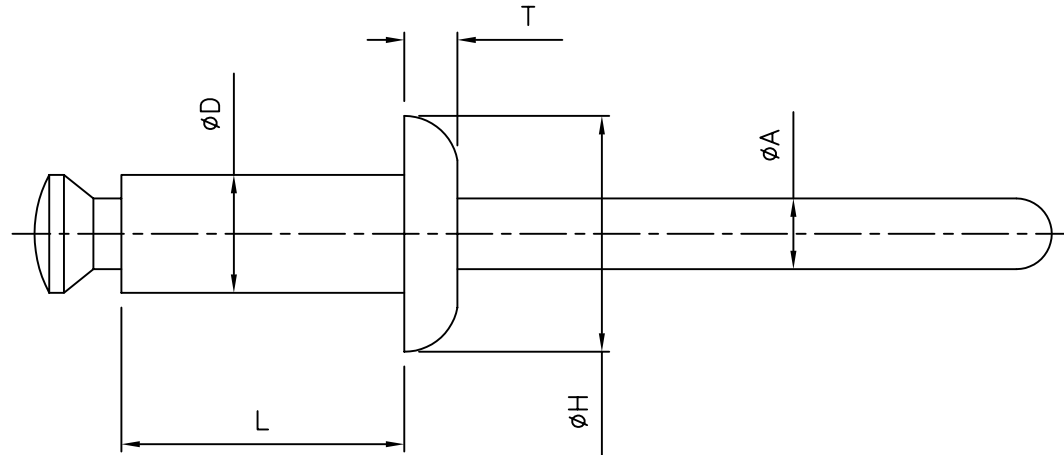


ISSUE No	REVISION	DATE	CHKD
A	NEW DWG	061000	JPM
BSCN 2001-094 021001			JPM



CR32-1-Y	3.3	1.0-4.0	3.2	6.4	6.4	1.4	2.1	12kg	20kg	1000
CR32-2-Y	3.3	4.0-7.0	3.2	9.6	6.4	1.4	2.1	12kg	20kg	1000
CR32-3-Y	3.3	7.0-10.0	3.2	12.7	6.4	1.4	2.1	12kg	20kg	1000
CR40-1-Y	4.1	1.0-4.0	4.0	6.4	8.0	1.8	2.4	18kg	25kg	1000
CR40-2-Y	4.1	4.0-7.0	4.0	9.6	8.0	1.8	2.4	18kg	25kg	1000
CR40-3-Y	4.1	7.0-10.0	4.0	12.7	8.0	1.8	2.4	18kg	25kg	1000
CR48-1-Y	4.9	1.5 - 5.0	4.8	8.0	9.6	2.0	2.8	28kg	40kg	500
CR48-2-Y	4.9	5.0 - 8.0	4.8	11.2	9.6	2.0	2.8	28kg	40kg	500
CR48-3-Y	4.9	8.0 - 11.0	4.8	14.4	9.6	2.0	2.8	28kg	40kg	500
CR56-1-Y	5.7	2.0 - 5.5	5.6	9.6	12.0	2.2	3.4	40kg	65kg	500
CR56-2-Y	5.7	5.5 - 8.5	5.6	12.7	12.0	2.2	3.4	40kg	65kg	500
CR56-3-Y	5.7	8.5 - 12.0	5.6	15.9	12.0	2.2	3.4	40kg	65kg	500
PART No.	MOUNTING HOLE DIA.	PANEL THICKNESS	ØD	L	ØH	T	ØA	TENSILE STRENGTH (yield)	SHEAR STRENGTH	STANDARD PACK QUANTITY

NOTES:

MATERIALS: RIVET - NYLON 6 (RMS-106)  
 MANDREL - POLYCARBONATE (RMS-107)  
 COLOURS: BLACK-1, WHITE-2, GREY-3, BEIGE-4

<small>INFORMATION CONTAINED IN THIS DOCUMENT IS CONFIDENTIAL TO RICHCO INTERNATIONAL COMPANY AND MAY NOT BE DISCLOSED OR REPRODUCED IN WHOLE OR PART WITHOUT THEIR WRITTEN CONSENT</small>		DRN	MATERIAL: SEE NOTE	
PART DESIGNED IN METRIC / IMPERIAL		JPM	TITLE CLINCH RIVETS	
TOLERANCES -UNLESS OTHERWISE STATED		CHKD PG		
1 PLACE ± 0.25		APPD	DESCRIPTION	SIZE
2 PLACE ±		PTG	CRXX-X-Y	A4
ANGLES ± -- °		SCALE	DRG No	SHEET No
		NTS	380-1001	1 of 1
				DATE
				061000

